



Butterworth Road, Sutton In Ashfield, NG17

£1,100 Per Month

\* Rent Free – Limited Time Offer\*

Location, Travel & Local Community

Welcome to Portland Fields Sutton In Ashfield - a charming semi-detached house that could be your next dream home!

Situated in a peaceful neighbourhood, this house offers a tranquil retreat from the hustle and bustle of everyday life.

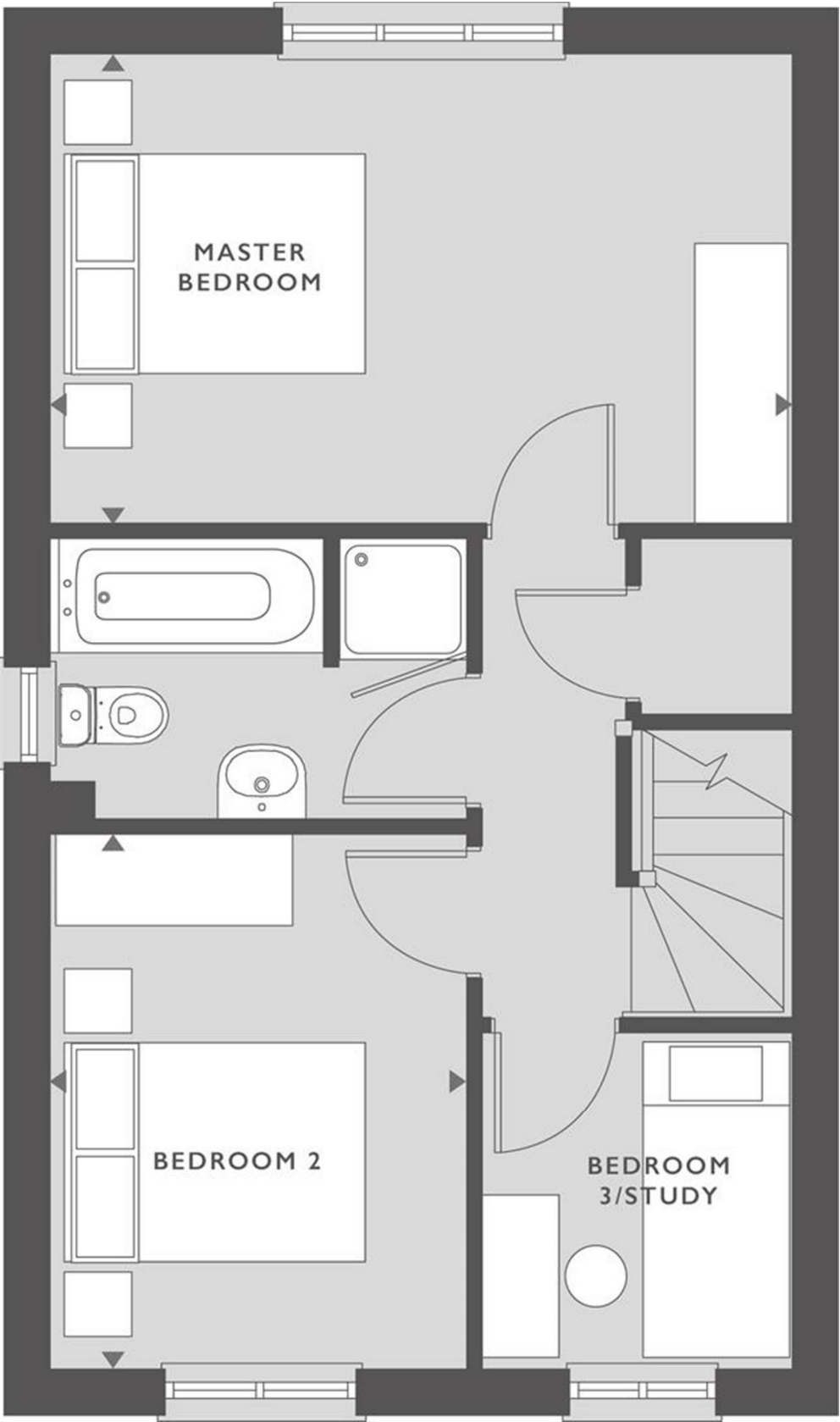
Education & SCHOOLS NEARBY

The area provides excellent opportunities for children aged 4-18, with a range of schools ranging from Kindergartens all the way up to Primary schools all within 1.5 miles of the site. Making the school run quick and easy.

About Your Home - THE ASHTON

The Ashton+ at Portland Field offers modern living with a stylish open-plan living and dining area that boasts French doors leading to the rear garden, creating a bright and inviting space for entertaining or relaxing. Upstairs, you'll find two spacious double bedrooms, along with a versatile third bedroom perfect for use as an office. The contemporary family bathroom is beautifully designed with a separate shower cubicle and finished with elegant Porcelanosa tiles. For added convenience, the property includes a downstairs WC. Ideal for comfortable and flexible family living.





Energy Efficiency Rating		Environmental Impact (CO <sub>2</sub> ) Rating	
Very energy efficient - lower running costs	Score	Very environmentally friendly - lower CO <sub>2</sub> emissions	Score
<b>96</b>	<b>A</b>	<b>96</b>	<b>A</b>
81-95	B	81-95	B
66-80	C	66-80	C
51-65	D	51-65	D
36-50	E	36-50	E
21-35	F	21-35	F
6-20	G	6-20	G
Not energy efficient - higher running costs		Not environmentally friendly - higher CO <sub>2</sub> emissions	